

Cat. No. 550 DP563 Pro Logic II Firmware Upgrade Kit Instructions

The Cat. No. 550 Dolby® DP563 Pro Logic® II firmware upgrade kit contains the files and information necessary to upgrade your DP563 Dolby Surround Encoder. Having purchased this upgrade, you will have access to the latest matrix surround encoding process, Dolby Pro Logic II.

This upgrade also includes support for external Dolby E metadata signals and an updated user interface that will be more familiar to users of other Dolby products. For full details, please see the updated *DP563 User's Manual* which is included in the upgrade kit.

Please register your products via our website at www.dolby.com. By doing so, you will enable our engineers to contact you directly when important information or updated software for you products becomes available.

Upgrade Procedure

In order to perform the upgrade, a PC with at least one available COM port (RS-232) is required. The upgrade has been tested on PCs running Windows® 95 (all versions); 98 (including second edition); NT4.0; 2000; and XP Professional.

Note: Due to the major changes in this firmware, the unit settings and presets will be reset to their default values. Before commencing the upgrade procedure, write down the values of any user-defined presets or settings.

1. Run the executable file **DP563SoftwareUpgradePackage.exe** from the CD-ROM or from a local copy on your hard disc. This process will install the latest version of the DolbyLoad software onto the PC, as well as the files required for upgrading the DP563. It is recommended that all other programs are closed on the PC while performing this installation.
2. The executable will run through an InstallShield wizard and you will be guided through steps 3 to 6 on screen.
3. Read the warning screen, and then click 'Next'.
4. Read the license screen. Click 'Yes' to continue the installation procedure; click 'No' to exit the installation procedure.

- At the screen in Figure 1, enter the desired location for the relevant files to be installed.

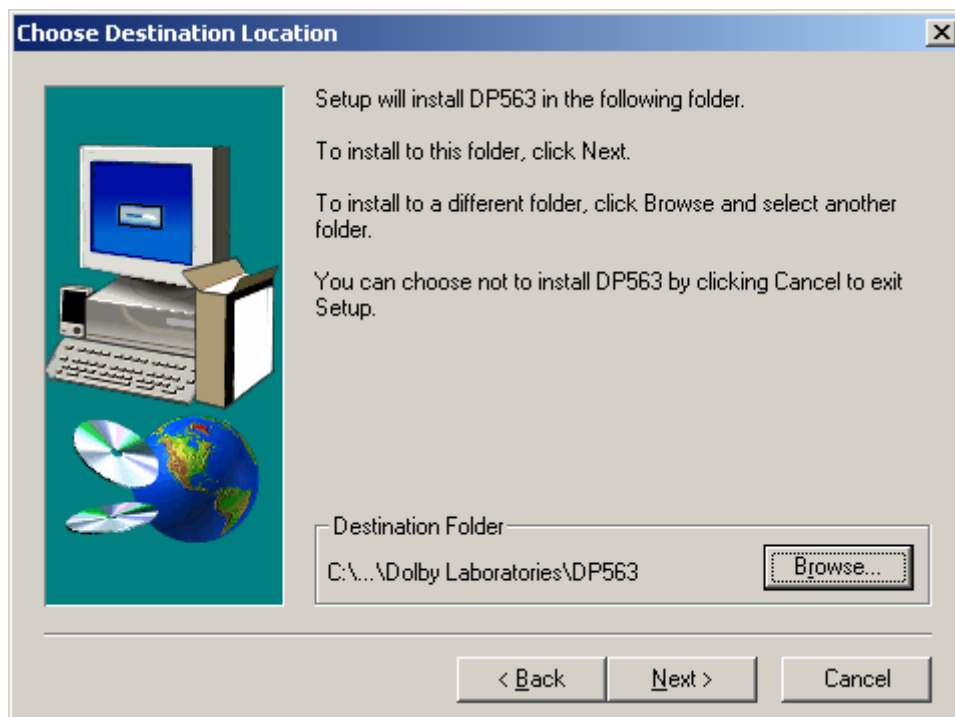


Figure 1 Dialog for choosing destination of software

- Click 'Next' to perform the installation.
- Click 'Finish', and DolbyLoad will open automatically (see Figure 2).

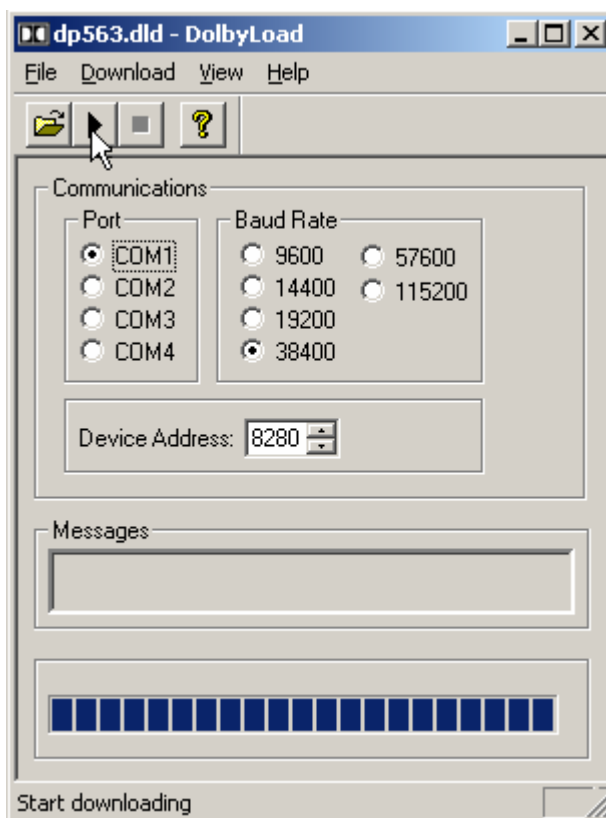


Figure 2 DolbyLoad window

8. Connect a serial cable from the chosen COM port on the PC to either the front-panel remote port (RS-232) or the rear-panel remote port (RS-485) of the DP563. The front-panel port is an 8-pin Mini DIN connection. A suitable cable is supplied with the DP563 or can be ordered from Dolby Laboratories (part number 83367).
9. Place the DP563 in upgrade mode by selecting 'Firmware upgrade' from the 'OPERATING MODE' menu.
10. Select the appropriate COM port and baud rate then press the play button. COM 1 at 38400 bps is selected by default unless the software has previously been installed. In this case the last used settings are selected. A dialog box will be displayed.
11. Click 'Yes' to confirm that the unit is in upgrade mode. The upgrade is performed. The DolbyLoad software and the DP563 front-panel display indicates upgrade progress. This takes approximately 5 minutes.
12. At the onscreen prompt to perform a factory reset on the DP563, click 'OK'.
13. While the DP563 is rebooting, hold down the front-panel 'Enter' key until 'Factory Reset' is displayed.
14. To complete the reset, press 'P1'. The DP563 reboots and the upgrade is complete.