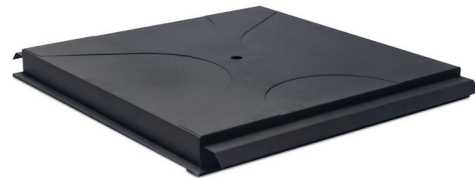




# SLS 3-Axis Speaker MA390C



RCT-24  
Recessed Ceiling kit



FCT-24  
Flat Ceiling kit

## SMALLER, LIGHTER, EASIER TO INSTALL

The SLS 3-Axis Speaker MA390C system has been developed to reduce the time and expense involved with installing overhead speakers needed for Dolby Atmos® cinema applications.

Featuring a 300 W, 12" coaxial full-range speaker and passive crossover, the MA390C is housed in a spherical shaped, molded enclosure that enables quick installation and easy three-axis rotation for fulfilling Dolby Atmos aiming configurations.

Choose from the FCT-24 flat ceiling kit which allows you to mount the speaker below the grid ceiling. If the speaker will obstruct the top of the projector image, use the RCT-24 Recessed Ceiling Kit which can reduce projector sight line obstructions.

The MA390C also works equally well for side and rear surrounds when used with the optional WMA-15 Wall-Mount Rigging Kit.

## KEY FEATURES

- Replaces a 2' x 2' (0.6 x 0.6 m) ceiling tile when used with optional rigging kit
- Reduces Dolby Atmos ceiling speaker installation time by not requiring any rigging hardware attached to building truss other than a simple safety cable
- Ceiling grid supports the speaker and optional rigging kit
- Ceiling tile rigging kits do not break plenum space
- 12" coaxial speaker rated @300 W-RMS, 96 dB sensitivity
- Spherical shaped speaker enclosure design that allows for quick installation and easy aiming with three-axis movement capabilities
- Ships ready to install from a single point, (typically all-thread) giving the user three-axis (pan, tilt, and rotation) adjustments without the need for additional brackets or hardware
- Two overhead rigging kits available: FCT-24, RCT-24
- WMA-15 Wall-Mount Kit



## SLS 3-Axis Speaker MA390C

### SPECIFICATIONS\*

---

• Operating Range	60 Hz to 20 kHz
• Sensitivity (1W@1M) <sup>1</sup>	96 dB
• Coverage Angle <sup>2</sup>	90 Degrees (Conical)
• Continuous Power Rating <sup>3</sup>	300 W AES
• Max SPL (Calculated) 1M	121 dB Cont/ 124 dB Program
• Nominal Impedance	8 Ohms
• Transducers	
LF	12" Woofer
HF	1.75" Coaxially Mounted
• Input	Barrier Strip
• Dimensions	20" (508 mm) H 21.7" (551 mm) W 16.1" (410 mm) D
• Enclosure	Molded
• Net Weight	28 lb (12.7 kg)
• Optional Accessories	FCT-24 Flat, Metal Tile Bridge RCT-24 Recessed, Metal Tile Bridge WMA-15 Wall-Mount Kit

1. A sine wave sweep is applied to a voltage level measured at the loudspeaker terminals corresponding to 1W@1M as referenced to the loudspeakers' nominal impedance and the measuring distance. SPL is measured in an anechoic environment in the loudspeakers' far field with the exception of subwoofers, which are measured in half space. Sensitivity is determined by a Log/Log averaging method from 315 Hz to 16 kHz in the anechoic environment. Subwoofers use the same method with the half space measurement but within their specified operating bandwidth.

2. Averaged from 500 Hz to 8 kHz.

3. AES established in accordance with AES/2-2012 standard.

4. This documentation applies to Models: CID1000 (Speaker) and CID1004 (Rigging kit).

The English version of this document is the only legally binding version.  
Translated versions are not legally binding and are for convenience only.

Specifications are subject to change without notice.

